



The 7th ANNUAL MEETING PAAI – 8TH APCAMM Booklet 2025



Introduction

Coastal regions, supporting 40% of the global population, are susceptible to environmental perturbations. The Asia-Pacific region is particularly vulnerable to the combined effects of climate change and rapid urbanization. These pressures manifest as rising sea levels, altered precipitation patterns, increased frequency and intensity of extreme storm events, and anthropogenic impacts, all of which exacerbate existing stresses on freshwater resources. Consequently, achieving Sustainable Development Goals related to clean water and sanitation is increasingly difficult, especially with regard to groundwater salinization, over-extraction, and contamination.

To address these critical issues, the Asia-Pacific Coastal Aquifer Management Meeting (APCAMM) and the Perhimpunan Ahli Airtanah Indonesia (PAAI), the Indonesian Association of Groundwater Experts, will convene a joint conference in Indonesia from August 4–7, 2025. Indonesia, characterized by its extensive coastline and facing substantial groundwater management challenges intensified by climate change and urbanization, provides an ideal setting for this important gathering.

The conference program will include a field excursion to the Jakarta coast, allowing participants to understand the coastal hydrogeology and related issues such as land subsidence. This joint meeting will facilitate collaboration among experts, policymakers, and community representatives, fostering the development of innovative and sustainable strategies for resilient coastal aquifer management.

Venue

The joint APCAMM–PAAI meeting will be held in the Bandung geoscience hub and serves as a center for Institute of Technology (ITB), Jalan Ganesha no.10, Bandung City. Bandung, the capital of West Java Province, is renowned as Indonesia's academics and government agencies focused on groundwater management, making it an ideal location to host this joint APCAMM– Indonesian Groundwater Experts (PAAI) meeting.

The venue location is the East Campus Center, ITB (<https://g.co/kgs/oQxi6ji>), equipped with main auditorium, parallel meeting rooms for workshops and technical sessions, and a large entrance area for poster presentation.

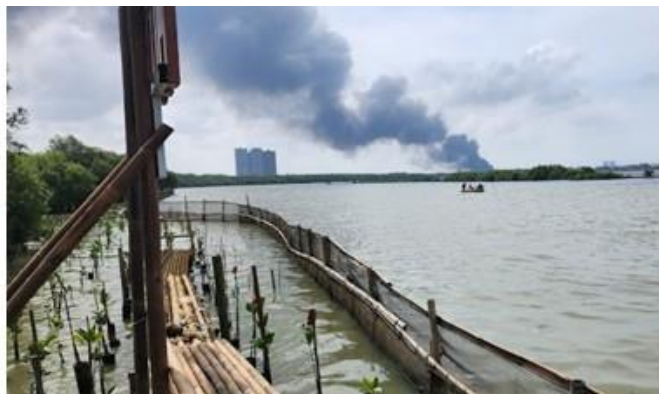


Field Trip

Field excursion to the Jakarta Coastal Area is scheduled for August 7, 2025. The trip will be guided by the Groundwater Conservation Technical Unit of the Indonesian Geological Agency (BKAT, Badan Geologi). Participants will explore Jakarta's coastal hydrogeology, examining challenges posed by climate change, urbanization, and land subsidence, as well as the city's coastal defense strategies.

Field trip agenda includes:

- Land subsidence monitoring facilities in Jalan Tongkol and Nizam Zachman Port Affairs Office
- Musium " Oud Uitskijpost " Bahari, Nautical Museum
- Land subsidence sites including Muara Baru sunken mosque and coastal embankment.
- Mangrove conservation in Pantai Indah Kapuk (PIK)



The main theme of the joint 8th APCAMM– PAAI Meeting is "Resilient Coastal Aquifer Management in Tropical Regions: Adapting to Climate Change and Urbanization". The conference sub-themes include, but are not limited to:

- Hydrogeology, climate change and urbanization impact to tropical coastal aquifers
- Water resource management in coastal regions
- Sustainable practices, policies and finance for water resilience in the coastal regions
- Environmental hydrogeology in various geological settings.
- Groundwater–surface water interaction
- Groundwater quality and pollution
- Groundwater management in infrastructure project and geotechnical issues
- Groundwater and drought
- Research and case studies of groundwater in urban areas, extractive industries (mining, oil and gas, other industries), conservation measures.
- Advanced technology on hydrogeology
- Remote sensing and artificial intelligence application on hydrogeology

Pre-Event Workshop: 4 August 2025

1) Workshop on coastal flood modeling

This workshop provides an understanding of coastal flood types and their impacts. Participants will learn about data acquisition, the fundamental principles of coastal hydrodynamics, and basic modeling techniques. The workshop will also cover numerical modeling applied to a typical coastal area, including calibration and validation using observed data.

Speakers: Dr. Edi Riawan, Dr.Eng. Fikry Purwa Lugina, Dr.Eng. Faruq Khadami

Fee: **FREE**

2) Introduction to Groundwater Modeling

This workshop provides insight into the basics of groundwater, including flow equations and concepts, and introduces basic groundwater modeling. Participants will also learn about numerical modeling applied to a typical groundwater basin, covering calibration and validation using observed data.

Speakers: Prof. Lilik Eko Widodo, APCAMM Expert **To be confirmed**

Fee: IDR 650K/USD 40

3) Environmental hydrogeology in energy and mineral industry

This workshop covers the fundamental principles of groundwater chemistry and isotope hydrology, including practical instruction on analyzing and interpreting hydrochemical and isotopic data. Participants will gain an understanding of groundwater's role in various environmental processes and learn to evaluate groundwater quality and identify potential contamination sources. Special emphasis will be placed on groundwater quality in mining areas, addressing challenges such as acid mine drainage, heavy metal contamination, and the long-term impact of extraction activities on aquifers. The workshop will also cover strategies for monitoring, remediation, and sustainable water management to maintain environmental health while supporting energy and mineral resource development.

Speakers: Prof. Lambok M. Hutasoit, Irwan Iskandar Ph.D.,
Riostantieka M. Shoedarto Ph.D.

Fee: IDR 750K/USD 46

) All workshops are of limited seats, so early registration is encouraged. Should a workshop not meet minimum enrollment requirements, registered attendees may be reassigned to a different workshop, and refunded for the **price difference.*

International Scientific Committee

- Prof. Adrian Werner (Chair), Flinders University (Australia), APCAMM founder and former Chair
- Dr. Amir Jazayeri (Secretary), Flinders University (Australia)
- Dr Cristina Solorzano–Rivas (Secretary), Flinders University (Australia)
- Prof. Elango Lakshmanan, Anna University (India)
- Prof. Jiu Jimmy Jiao, Hong Kong University, APCAMM founder and former Chair
- Prof. Namsik Park, Dong–A University (Korea), APCAMM founder and former Chair,
- Prof. Pei Xin, Hohai University (China)
- Prof. Quy Nhan Pham, Hanoi University of Natural Resources & Environment (Vietnam), APCAMM founder
- Prof. Srilert Chotpantarat, Chulalongkorn University (Thailand)
- Dr. Norsyafina Roslan, Universiti Kebangsaan Malaysia
- P.Geol. Adam Hashim, Vice President of Institute of Geology Malaysia

Indonesian Committee / Indonesian Groundwater Experts (PAAI)

Advisors

- Prof. Lambok M. Hutasoit, Institute Technology of Bandung (ITB)
- Prof Sudarto Notosiswoyo, Institute Technology of Bandung (ITB)
- Prof. Denny Djuanda, Institute Technology of Bandung (ITB)
- Prof. Rudi Sayoga Gautama, Institute Technology of Bandung (ITB)
- Prof. Riset Robert Delinom, National Research and Innovation Agency (BRIN)
- Prof. Lilik Eko Widodo, Institute Technology of Bandung (ITB)
- Prof. Agus Mochamad Ramdan, Institute Technology of Bandung (ITB)
- Dr. Irwan Iskandar, Institute Technology of Bandung (ITB)
- Prof. Hendarmawan, Universitas Padjajaran (UNPAD)
- Prof. Heru Hendrayana, Universitas Gadjah Mada (UGM)
- Dr. Abdurrachman Assegaf, Universitas Trisakti
- Ir. Wahyudin M.Eng, Badan Geologi

National Organizing Committee

- Dr. Dwi Sarah, National Research and Innovation Agency (BRIN)
- Dr. Edi Riawan, Institut Teknologi Bandung (ITB)
- Dr. Taat Setiawan Geological Agency, Ministry of Energy and Mineral Resources (ESDM)
- Dr. Boy Yoseph CSS Syah Alam Universitas Padjajaran (UNPAD)
- Dr. Ahmad Taufiq Ph.D., Ministry of Public Works
- Dr. Jossi Erwindy, Ministry of Public Works
- Dr.Sci.R.Fajar Lubis, National Research and Innovation Agency (BRIN)
- Riri Febrina M.Eng, Indonesian Groundwater Experts (PAAI)
- Mella Puspita M.Eng, Indonesian Groundwater Experts (PAAI)
- Narulita Santi M.Eng, Universitas Diponegoro (UNDIP)
- Teuku Reza M.Eng, ITB Doctoral Student
- Karin Nadira Dauwani M.Eng, ITB Doctoral Student
- Andre P Arifin M.Eng Ministry of Public Works (PU)
- Faizal Abdillah M.Eng, Geological Agency, Ministry of Energy and Mineral Resources (ESDM)
- Nico Anatoly M.Eng, National Research and Innovation Agency (BRIN)
- Anggita Agustin M.Eng, Jacobs

Full Paper Submission (Optional)

Full paper submission is optional, but we highly encourage you to submit to *Riset Geologi dan Pertambangan* (RGP). [Riset Geologi dan Pertambangan – Geology and Mining Research](#) is an open-access journal managed by dedicated Earth science enthusiasts and published by BRIN Publishing (Penerbit BRIN). We are committed to making Earth science research freely accessible to all. RGP offers both open access for readers and no article processing charges (APCs) for authors.

The journal publishes research papers, reviews, and short communications across various interdisciplinary fields within geosciences, including geology, geophysics, geochemistry, mining, engineering geology, economic geology, and environmental geology. Continuing our tradition of featuring special issues for the annual Indonesian Groundwater Experts (PAAI) meeting, this year's edition will also feature a special issue dedicated to hydrogeology, showcasing manuscripts from the APCAMM–PAAI joint meeting. RGP has recently been indexed in Scopus, as well as in Clarivate Analytics (WoS) and SINTA-2. You can explore the journal [here](#):

RGP is published twice a year, in June and December. All articles in RGP are open access and distributed under the terms of the Creative Commons Attribution. Submitted papers undergo a double-blind peer review process. Authors can download the guidelines and manuscript template [here](#).

Riset Geologi dan Pertambangan (Geology and Mining Research)

ISSN [0125-9849](#), e-ISSN [2354 6638](#)

Tentative Agenda

Pre-Event– August 4,2025 (ITB Campus, Bandung)		Day-1, August 5,2025 (ITB Campus, Bandung)	
Workshop Registration	08.00–09.00	Registration	08.00–08.30
Parallel Workshops	09.00–12.00	Opening	08.30–09.00
1. Coastal Flood Modelling		Chairperson Report	09.00–09.05
2. Introduction to Groundwater Modelling		Welcoming Speech from PAAI Chairman	09.05–09.10
3. Environmental Hydrogeology: Hydro geochemistry and Isotope		Keynote Speech	09.10–09.20
Lunch and Prayer Time	12.00–13.00	Coffee Break	09.20–09.30
Workshop Continue	13.00–16.00	Panel Discussion	09.30–10.30
Ice Breaking		Parallel session I/Oral and Poster Sessions	10.30 – 12.00
PAAI–APCAMM (optional)	19.00–21.00	Lunch and Prayer Time	12.00–13.00
		Parallel session II/Oral and Poster Sessions	13.00–17.00
		Ice Breaking for All Participants (optional)	19.00–21.00
Day-2, August 6,2025 (ITB Campus, Bandung)		Day-3, August 7,2025 (BKAT, Jakarta)	
Registration	08.00–08.15	Trip to BKAT from ITB	07.00–09.00
Parallel session III/Oral and Poster Sessions	13.00–17.00	Field Trip to Jakarta Coastal Area	09.00–17.00
Coffee Break/Poster Session	10.00–10.20		
Discussion Forum on Coastal Groundwater Management in the Asia Pacific	10.20–12.00		
Lunch and Prayer Time	12.00–13.00		
Parallel session IV/Oral and Poster Sessions	13.00–17.00		
Announcement for Best Presenter and Best Poster	17.00 –17.30		

Important Dates

Description	Date	Remark
Call for Abstract	3 March–3 June 2025	https://www.airtanah.org/#event
Deadline for Abstract	06 June 2025	https://www.airtanah.org/registration
Notification for Abstract Acceptance	20 June 2025	https://www.airtanah.org/#event
Full Paper Submission Deadline	19 July 2025	https://www.airtanah.org/registration/full-paper
Poster Submission Deadline	19 July 2025	https://www.airtanah.org/registration/poster-submission
PAAI–APCMM Groundwater Workshop	04 August 2025	ITB Campus, Bandung
Keynote Speech and Technical Support	05–06 August 2025	ITB Campus, Bandung
Field Trip	07 August 2025	Jakarta Coastal Area

Registration Fees

Type of Presentation	Attendant	Fee
Oral Presentation	International Presenter	USD 100
	International Student Presenter	USD 50
	Professional	IDR 1.600.000
	Government	IDR 750.000
	Student (proven by ID card)	IDR 500.000
	Early Bird* *) 3 March –18 April 2025	IDR 500.000
Poster Presentation (for Student)	Student	IDR 500.000
Participants	International Participant	USD 80
	International Student Participant	USD 30
	Professional	IDR 1.000.000
	Government	IDR 500.000
	Student	IDR 250.000
Workshop (Optional, choose one)	A. Environmental Hydrogeology	IDR 750.000/USD 46
	B. Groundwater Modelling	IDR 650.000/USD 40
	C. Coastal Flood Modelling	Free
Field Trip to Jakarta Coastal Area	Optional	IDR 350.000/USD 22

We invite you to register at:
<https://www.airtanah.org/registration>

Event Information
<https://www.airtanah.org/#event>

PAAI- APCAMM Booklet
<https://www.airtanah.org/booklet>

Hotel Recommendation
<https://www.airtanah.org/hotel-recommendation>

How to get to Bandung

If you're arriving at Soekarno–Hatta International Airport and heading to Bandung City, you have two main options to reach KCIC Halim Station for the Whoosh train, aside from other available transport methods. The first option is to take the DAMRI feeder bus, which provides a direct route to KCIC Halim Station. The second option is to board the airport train to BNI City Station. From there, walk to Sudirman Station, use the pedestrian bridge, and head up to Dukuh Atas LRT Station. Then, take the Jabodebek LRT on the Bekasi line and get off at Halim LRT Station. From there, it's just a short walk across the sky bridge to reach KCIC Halim Station.

Once you arrive in KCIC Halim Station, board the [Whoosh high-speed train](#) to Padalarang Station. After arriving in Padalarang, continue your journey by taking the feeder train to Bandung City Station. This route provides a smooth and convenient way to reach Bandung.